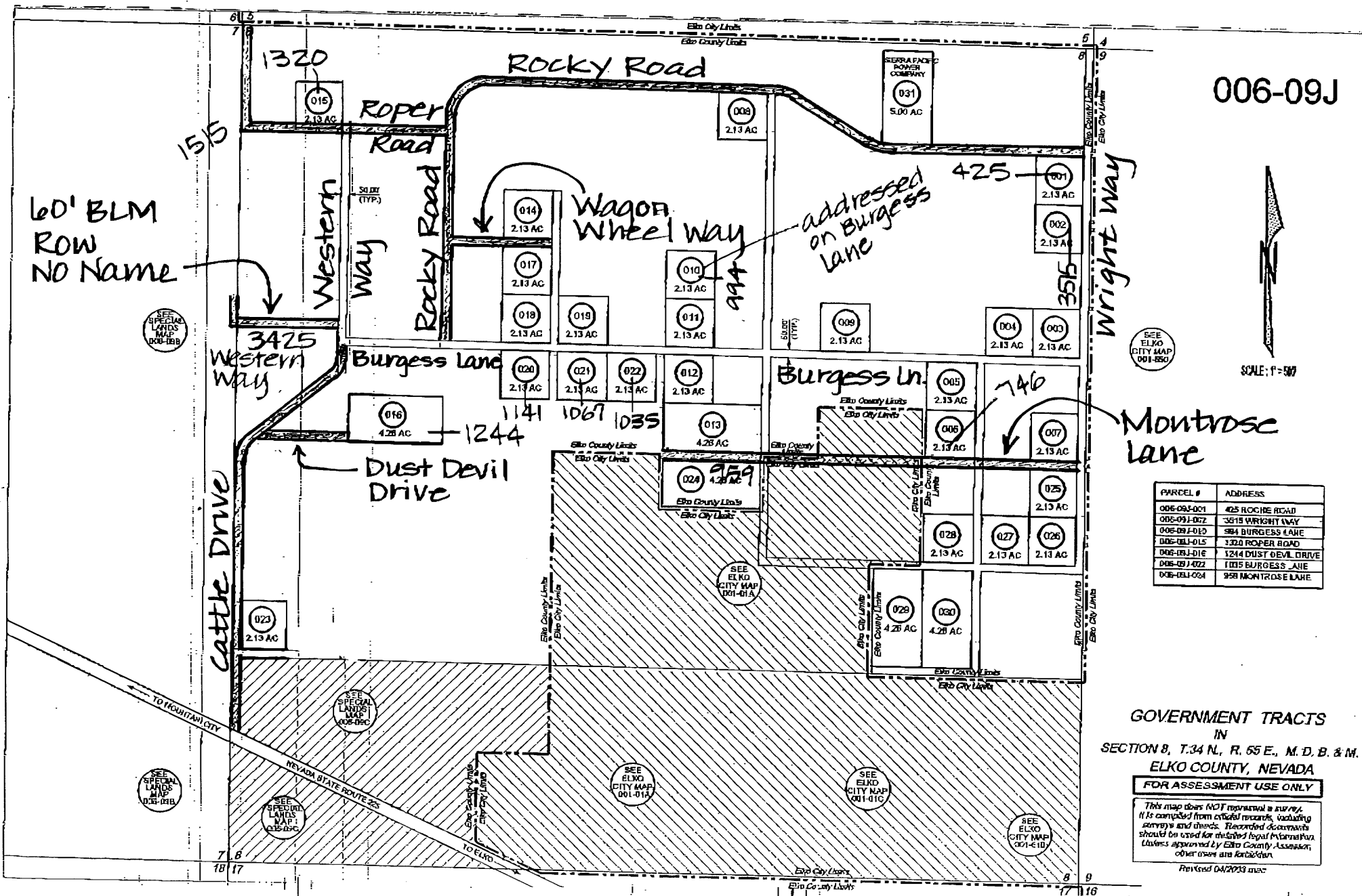


006-09J



SCALE: 1" = 50'



PARCEL #	ADDRESS
006-09J-001	425 ROCKIE ROAD
006-09J-002	3618 WRIGHT WAY
006-09J-003	984 BURGESS LAKE
006-09J-004	1320 ROPER ROAD
006-09J-005	1244 DUST DEVIL DRIVE
006-09J-006	1067 BURGESS LAKE
006-09J-007	958 MONTROSE LAKE

GOVERNMENT TRACTS
IN
SECTION 8, T.34 N., R. 55 E., M. D. B. & M.
ELKO COUNTY, NEVADA

FOR ASSESSMENT USE ONLY

This map does NOT represent a survey. It is compiled from various records, including surveys and deeds. Enclosed documents should be used for detailed legal information. Unless approved by Elko County Assessor, other uses are prohibited.

Revised 04/2013 mac